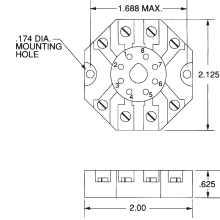
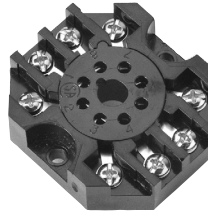


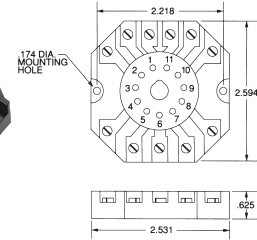
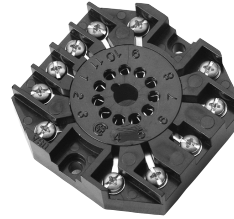
SURFACE MOUNTED— RB-08

Recommended for use with all 8 pin octal plug-in devices. UL Recognized and CSA Certified for 10 Amps @ 600 VAC. The molded thermoplastic base has brass, nickel plated inserts with #6-32 steel, nickel plated screws.



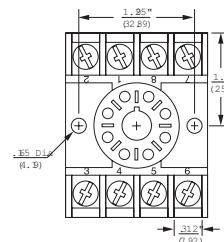
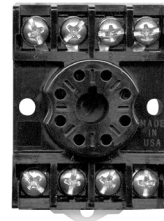
SURFACE MOUNTED— RB-11

Recommended for use with all 11-pin magnal plug-in devices. UL Recognized and CSA certified for 10 Amp @ 300 VAC. The molded thermoplastic base has brass, nickel plated inserts with #6-32 steel, nickel plated screws.



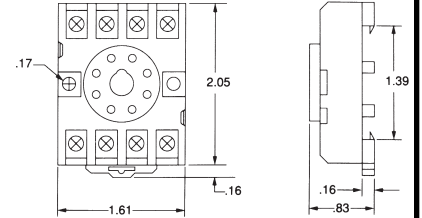
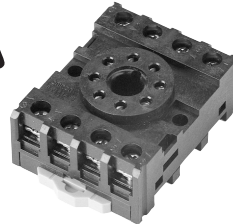
DIN RAIL/SURFACE MOUNTED—OT-08

DIN Rail mount. Recommended for use with all 8 pin octal plug-in devices. UL Recognized and CSA Certified for 10 Amps @ 600 VAC. The molded thermoplastic base has brass, nickel plated inserts with #6-32 nickel plated screws.



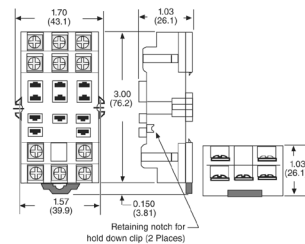
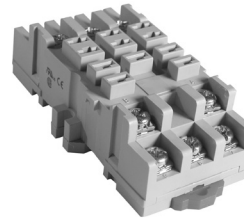
DIN RAIL/SURFACE MOUNTED—PF083A

Recommended for use with all 8 pin octal plug-in devices. UL Recognized and CSA Certified for 10 Amps @ 300 VAC. The molded polycarbonate base has brass, nickel plated inserts with #6-40 steel, nickel plated screws and captive self-lifting terminal clamps.



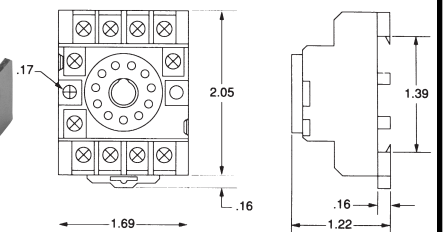
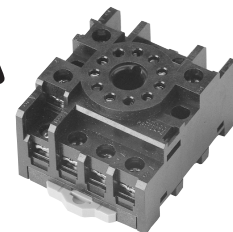
SURFACE MOUNTED— 70-463-1

Recommended for use with all 0.187 blade 11 Pin Square base plug-in devices. UL Recognized and CSA Certified for 10 Amps @ 300 VAC. The molded thermoplastic base has brass, nickel plated inserts with #6-32 steel, nickel plated screws.



DIN RAIL/SURFACE MOUNTED—PF113A

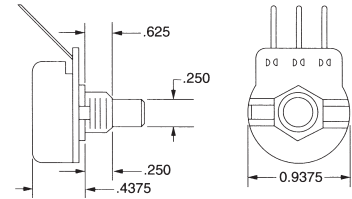
Recommended for use with all 11 pin magnal plug-in devices. UL Recognized and CSA certified for 10 Amps @ 300 VAC. The molded polycarbonate base has brass, nickel plated inserts with #6-40 steel, nickel plated screws and captive self lifting terminal clamps.



ACCESSORIES

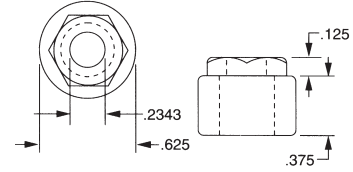
ADJUSTMENT—101026105

Recommended for use with all the ATC Diversified Electronics family of "remote adjustable" timers. Proper spacing is maintained for UL and CSA applications. This linear taper potentiometer has a non-conductive shaft attached to the internal conductive plastic wafer. The brass bushing is 3/8" x 32NEF and accepts adjustment hardware 100054070, 100054071



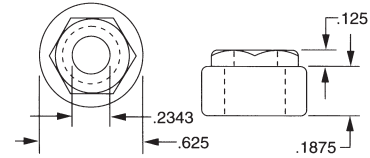
ADJUSTMENT HARDWARE LOCK NUT—100054070

Recommended for use with any adjustment or switch having a 3/8" x 32NEF bushing and 1/4" shaft. When the nut is tightened, the tapered center hole squeezes the shaft, preventing vibration mis-adjustment. Molded from black glass filled nylon with a UL 94V-0 rating.



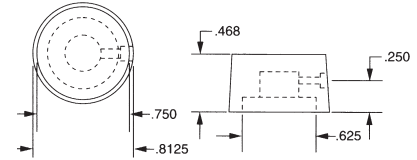
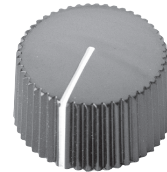
FLAT NUT—100054071

Recommended for use with any adjustment or switch having a 3/8" x 32NEF bushing and 1/4" shaft. Ideally suited for a 101026105 adjustment and 100054073 knob. This combination allows for no exposed metal parts required by UL and CSA. Molded from black, glass filled nylon with a UL 94V-0 rating.



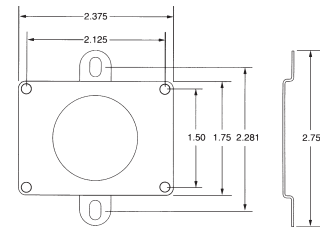
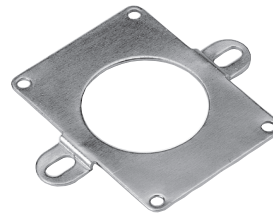
KNOB—100054073

Recommended for use with any adjustment or switch having a 1/4" shaft. This knob slips over the shaft and is secured in place by a #6-32 set screw. The knurled, mirror finished, black thermostat knob has a white pointer line for reference.



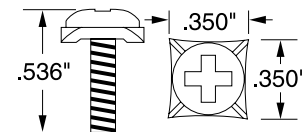
HOLD DOWN BRACKET—100054080

Recommended for use with ATC-Diversified Electronics devices having octal or magnal plug-in bases. Made of .040 steel with a yellow chromate coating. The bracket secures to the enclosure via four (4) corner screws and can be factory assembled to any device when ordered.



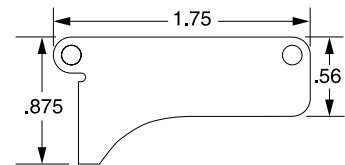
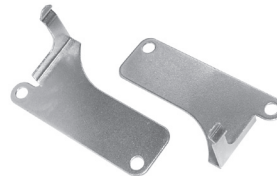
SADDLE CLAMP SCREW—100054226

The Saddle Clamp Screw can be used with all ATC-Diversified Electronics Style E surface mount enclosures.



SPRING CLIP—100054275

Spring Clip. Set of 2. Can only be used with the PF083A socket.



BRKT-A- 100054330

Panel mount bracket for style A enclosure

